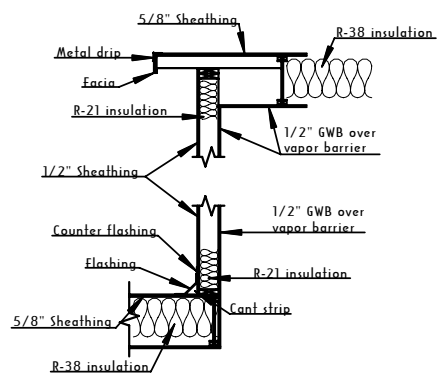
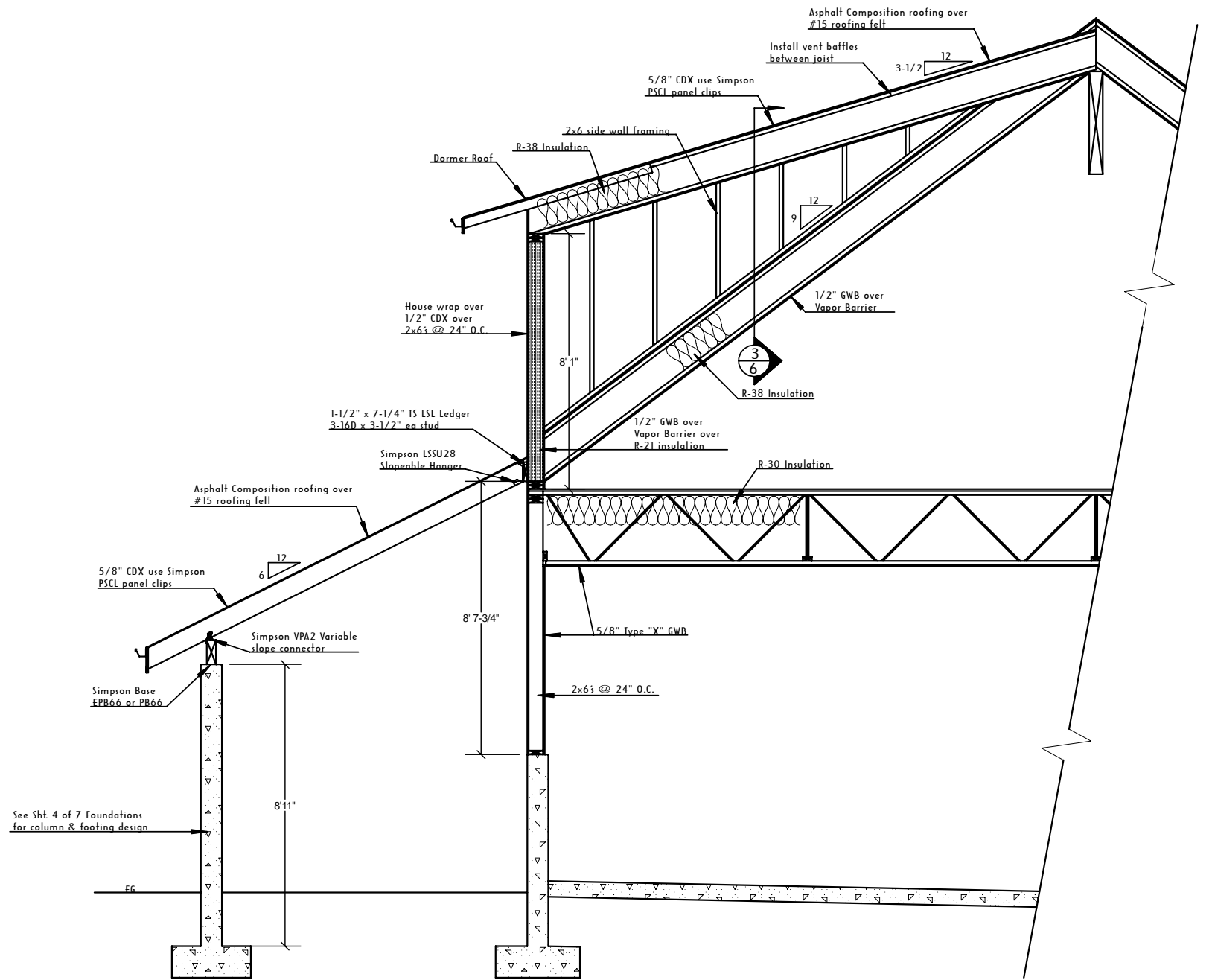


1  
6 **RIDGE BEAM SUPPORT GABLE ENDS**  
Scale 1/2" = 1'-0"



3  
6 **SECTION THRU DORMER WALL TYP.**  
Scale 1/2" = 1'-0"



See Sht. 4 of 7 Foundations  
for column & footing design

2  
6 **SECTION TYPICAL DORMER**  
Scale 1/2" = 1'-0"